



Proposal Number:

Prepared for:

Date: 18 July 2023



Star Micronics GB Ltd

Contents of proposal document

- **Introductory Letter**
- **Star Machine Information**
- **Star Machine Specifications**
- **Star Selected Equipment**
- **FMB Bar feed machine information**
- **Delivery and Installation**
- **Training**
- **Pricing & Payment Terms**
- **Conditions of Sale**
- **Terms and Conditions**



Star SX-38 Type A



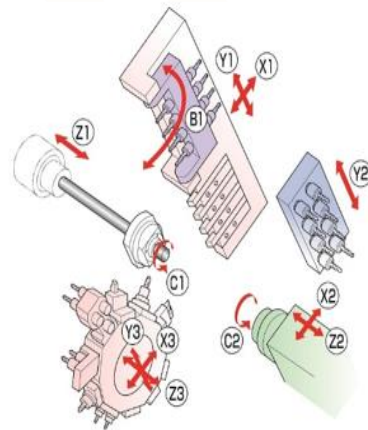
Star CNC Sliding Headstock Lathe model SX-38 Type A with FANUC 31i-B5 controller and 10.4" colour LCD display.

The SX-38 Type A is a versatile, powerful and heavy-duty solution for machining complex mill-turn parts up to 42mm diameter.

Features

- Fanuc 31i-B5 control with handwheel retrace and Star Motion Control System
- Built in spindle motors on main and sub for increased indexing accuracy
- 10 Station turret with independent Z axis enables SUPER-POSITION control for increased overlap
- Programmable B axis with 8 spindles for full 5-axis simultaneous machining
- Tool life management for each cutting tool by part count or cutting time
- Program Memory 8Mb
- Maximum total number of programs 1000 (HD1, HD2 & HD3)
- Eight station back attachment with Y2 axis for increased overlapped machining
- 9.5KVA Average power consumption
- Can be switched between guide bush and non-guide bush modes

Kinematic Diagram





Star SX-38 Type A

Star Machine

List Price

1-off Star CNC Sliding Headstock Lathe model SX-38 Type A

£ 266,000.00

Factory Fitted items

The below items are all factory fitted items included as part of the machine package

Part No.	Qty	Description
1A3-56	1	MAIN SPINDLE S38 COLLET SLEEVE (F48 / 81)
1A4-94	1	TRANSFORMER 30KVA CE VERSION
	1	8 SPINDLE UNIT FOR BACK WORKING
	1	AIR PURGE FOR REVOLVING GUIDE BUSH UNIT
	1	AUTOMATIC CENTRALIZED LUBRICATION UNIT
	1	BROKEN CUT OFF TOOL DETECTOR
	1	C AXIS CONTROL MAIN & SUB SPINDLE
	1	CS CONTOUR CONTROL ON MAIN AND SUB SPINDLE
	1	DOOR INTERLOCK SYSTEM
	1	DRIVE UNIT FOR POWER DRIVEN TOOL (BACK 8-SPINDLE UNIT)
	1	EARTH LEAKAGE BREAKER (RATED SENSITIVITY CURRENT 30MA)
	1	ELECTRONIC HANDWHEEL
	1	HYDRAULIC UNIT
	1	INTERNAL WORK LIGHT
	1	LEVELING BOLTS & PADS
	1	LOW LEVEL COOLANT DETECTOR SWITCH
	1	OPERATION / ELECTRICAL / PARTS LIST / NC CONTROL (CD ROM) MANUALS
	1	PARTS CONVEYOR
	1	REVOLVING GUIDE BUSH DRIVE UNIT
	1	SPINDLE CLAMP FOR MAIN & SUB SPINDLES
	1	SPINDLE COOLING UNIT
	1	TOOL KIT (1 SET)
1A4-09	1	PARTS EJECTION DETECTION PROXIMITY SWITCH
	1	BACK ATTACHMENT (SUB-SPINDLE)
424-39	1	CE MARK
	1	SUB-SPINDLE AIR PURGE UNIT
1C4-94	1	CABLE FOR CE TRANSFORMER



Star SX-38 Type A

93291005	1	SPARE M-CODE 2 PAIRS
95990026	1	FANUC MAINTENANCE CONTRACT
	1	PNEUMATIC UNIT
	1	WEDGE TYPE 4 STATION PLATEN (1 x 20MM & 3 x 16MM)
	1	4 SPINDLE MILLING UNIT ON B-AXIS (GANG TOOL POST) WITH B-AXIS CLAMP
	1	DRIVE UNIT FOR POWER DRIVEN TOOL (TURRET TOOL POST)
	1	BAR FEED INTERFACE - 24 CONTACTS
1T4-07	1	NON GUIDE BUSH 38MM VERSION
1T3-31	1	REVOLVING GUIDE BUSH UNIT S38 (464.001)
1C3-35	1	REVOLVING GUIDE BUSH MANUAL ADJUSTMENT NUT S38
1T4-36	1	STAND ALONE REMOVABLE COOLANT TANK - LARGE CAPACITY TYPE
1T4-59	1	COOLANT FLOW DETECTOR
1T4-78	1	ROTARY PARTS EJECTOR WITH SPRING
1T4-78A	1	PARTS EJECTOR WITH SPRING FOR SUB COLLET (F48 / 81)
1T4-14	1	PARTS SEPARATOR UNIT
1T4-29	1	JIG FOR NON-GUIDE BUSH
1T4-85	1	ADDITIONAL TERMINAL BASE
1T4-28	1	STATUS BEACON INTERFACE
1T4-19	1	2ND BARFEED INTERFACE - 8 CONTACTS
1T4-42	1	SWARF CONVEYOR INTERFACE - 20 CONTACTS
1T4-39	1	HIGH PRESSURE COOLANT INTERFACE - 46 CONTACTS
1T4-55	1	COOLANT UNIT 0.7MPA - SUB SPINDLE FLUSH
101-38	1	3 SPINDLE HOLDER FOR HIGH SPEED DRILL UNIT WITH HPC
1T4-64	1	COOLANT UNIT PIPING FOR TOOL HOLDER T1 ~ T4
1T4-69	1	COOLANT UNIT PIPING FOR TOOL HOLDER T1 (ONLY)
1T4-81	1	COOLANT UNIT PIPING FOR TURRET
1T4-67	1	COOLANT UNIT PIPING FOR BACK 8 STATION UNIT - EXTERNAL
1T4-68	1	COOLANT UNIT PIPING FOR BACK 8 STATION UNIT - INTERNAL
1T4-66	1	COOLANT UNIT PIPING FOR GUIDE BUSH
	1	USB + PCMCIA + RS232 + LAN INTERFACE PORT WITH COVER
1T4-48	1	SAFETY COVER FOR BARFEED TELESCOPIC
1T4-84	1	EXPANDED I/O MODULE UNIT



Star SX-38 Type A

Basic Specification items

The below items are included within the machine package

Part No.	Qty	Description	Indicative Image
FIRETRACE 9KG	1	FIRETRACE CO2 FIRE SUPPRESSION SYSTEM WITH 9KG BOTTLE AND FTSIM BOTTLE ISOLATION E-STOP DETECTOR ~ INCLUDES SERVICE AFTER 12 MONTHS BY FIRETRACE	
571-55	2	EXTENDED CROSS MILL / DRILL UNIT ER16	
121-03	1	BACK WORKING WEDGE TYPE 2 STATION TOOL HOLDER WITH COOLANT NOZZLE SUPPLY - SUITS 16MM SQ SHANK	
431-09 SMGB	1	WEDGE TYPE 2 STATION TOOL HOLDER WITH COOLANT NOZZLE SUPPLY - SUITS 16MM SQ SHANK	
413002000-44	1	2 SPINDLE CROSS MILL / DRILL UNIT ER20	
7.074.845	2	PRECI-FLEX CROSS MILL / DRILL UNIT ER20 WITH EXTERNAL COOLANT NOZZLE SUPPLY	



Star SX-38 Type A

2001-0090	2	PRECI-FLEX ER20 SIZE 20 ADAPTER	
581-12 SMGB	1	TRIPLE Ø32MM SLEEVE HOLDER WITH INTERNAL & EXTERNAL COOLANT SUPPLY	
SGB 0128	1	DOUBLE Ø32MM SLEEVE HOLDER WITH INTERNAL & EXTERNAL COOLANT SUPPLY	
12-1155	1	BACK WORKING D STYLE GRAF RH TURNING HOLDER (SUITS DC..11T3.. INSERTS) WITH INTERNAL COOLANT	
12-1201	1	BACK WORKING GRAF RH THREADING HOLDER (SUITS ER16.. INSERTS) WITH INTERNAL COOLANT	
421-21	3	COUNTER FACE DRILL SLEEVE ER20 (Ø32MM OD)	
ED 20 32 85 AK	3	COUNTER FACE DRILL SLEEVE ER20 (Ø32MM OD)	



Star SX-38 Type A

101-02 2 BACK WORKING THROUGH COOLANT DRILL UNIT ER25 (1/8 BSP INLET)



EM 20 34 SV38 AK1 2 BACK WORKING THROUGH COOLANT DRILL UNIT ER20 (1/8 BSP INLET)



012-080-A1 1 ADJUSTABLE PARTS COLLECTOR STAND WITH DRAW (INCLUDES 2 TRAYS)



65710055 1 WERMA E-SIGN STATUS BEACON INCLUDING TUBE, MOUNT 96000064 AND CABLE 960000047



725-92 1 PROGRAM UTILITY JR (PU-JR) - CNC PROGRAM EDITING SOFTWARE WITH CNC COMMS (RS232 / ETHERNET) MODULE



725-93 1 PU-JR USB PROTECTION KEY



1B4-23 1 TOOL PRESETTER





Star SX-38 Type A

584-23

1 TOOL PRESETTER TYPE B (ADAPTOR FOR BACK 8 STATION TOOLING)



SL HYDRAULIC OIL LV2

2 SL (SPINDLE COOLING) OIL 5LTR CONTAINERS



STAR GREASE KIT

1 GREASE KIT INCLUDES GREASE GUN & KLUBER ISOFLEX NBU 15 GREASE (400GR) & MULTEMP LRL No3 GREASE (400GR)





Star SX-38 Type A

Selected equipment for the Star SX-38 Type A

Part No.	Qty	Description	Price	Indicative Image
UB20-2000-8T	1	HIGH PRESSURE COOLANT UNIT (UB TWIN FILTER UNIT WITH 7 OUTLETS @ 140 BAR + 1 B-AXIS OUTLET @ 70 BAR SUPPLIED WITH HOSE KIT: KT-446-SX38A)	£ 14,200.00	
MH500 SX-38 LOW	1	TURBO MH500 SWARF CONVEYOR (LOW DISCHARGE) WITH INTEGRAL TIMER + AIR HEADER + TIPPING BIN + COOLANT CATCHER TRAY 22826347	£ 10,080.00	
A MIST 20HPS - BLUE	1	ABSOLENT A.MIST 20HPS IN STAR BLUE (SUPPLIED WITH 3M FLEXIHOSE + LIPPED FLANGE CONNECTOR + 90 DEG BEND + 500MM INNER)	£ 10,200.00	
616.0	1	JBS PNEUMATIC GUIDE BUSH UNIT (SUITS 06 TYPE JBS COLLET / 03 TYPE CONVERSION KIT INCLUDED)	£ 11,755.00	
932 A1 007	1	STEP CYCLE PRO - SYNCHRONISED OSCILLATION CHIP BREAKING SOFTWARE	£ 3,500.00	
	1	TOOLING ALLOWANCE FOR ACCESSORIES TO THE VALUE OF £2,000 (ALLOWANCE VALID FOR 36 MONTHS FROM INSTALL)	£ 2,000.00	
	1	FREE FILL OF MACHINE OIL		FOC
Sub Total of Selected Equipment			£	51,735.00



Star SX-38 Type A



1-OFF FMB AUTOMATIC BAR LOADING
MAGAZINE MODEL TURBO 5-65/3200/44
GB/NGB VERSION

Features

- Can accommodate bar from 5mm to 44mm diameter
- Rapid bar loading time – 30 seconds
- Up to 42mm bar does not require any bar end preparation
- Servo driven motor for controlled feeding of material
- Rigid construction and cast bed help eliminate noise and vibration
- Automatic loading of square or hexagonal stock is possible.
- Two stage feed principal with swivelling rear channel which shortens overall bar feed length
- Full 12 months unconditional parts and labour warranty

Machine Spec

- Synchronisation clutch arrangement
- Capacity adjustment sets available in a range of sizes
- Oil filled Polyurethane channel to prevent material vibration
- Roller steady support system that is manually adjustable to bar stock and pusher diameter
- Material storage of 250mm
- Gripper system for rear removal of bar remnant
- Electronically interlocked safety guarding
- Moveable control pendant for ease of use

Sub Total

£ 50,000.00