

# Online Auction Sales at: Meister Benelux, Belgium

Outstanding Ultra High Precision  
Machining Facility

**Cottrill & Co.**  
WORLDWIDE ASSET DISPOSALS



**Hilco**  
Industrial

Machine Tools — Tuesday 14th October 2014 at 13.00 (UK Time), 14.00 (CET Time)

Engineering Ancillaries — Tuesday 14th October 2014 at 14.30 (UK Time), 15.30 (CET Time)

Inspection & General Workshop Equipment — Wednesday 15th October 2014 at 13.00 (UK Time), 14.00 (CET Time)

Assembly Equipment — Wednesday 15th October 2014 at 14.30 (UK Time), 15.30 (CET Time)

Office Equipment — Thursday 16th October 2014 at 13.00 (UK Time), 14.00 (CET Time)



## UK Contact

• Tel: + 44 (0) 121 328 2424 • [www.cottandco.com](http://www.cottandco.com) •

## Continental Europe Contact

• Tel: + 31 (0) 20 470 0989 • [www.hilcoind.com](http://www.hilcoind.com) •

# About Meister Benelux



Meister Benelux manufactures complex high precision turned parts. It offers active safety systems, braking and vehicle dynamics, automatic gearboxes, servo steering, engine management systems, and electro-mechanical and electro-hydraulic controls. The company offers products for electronic, aviation, and automotive industry. The company was founded in 1983 and has been based in Sprimont, Belgium since 2000.

Meister Benelux is considered one of the leading international manufacturers of high precision turned parts with the full spectrum of modern production technology. These complex products are developed and tested in the company's own Technology Center. The range of offerings includes prototypes, pilot production lines, small and medium-sized production lines.

Meister Benelux has extensive facilities for surface processing with curve or CNC-controlled turning machines, as well as CNC-controlled automatic production and testing systems.

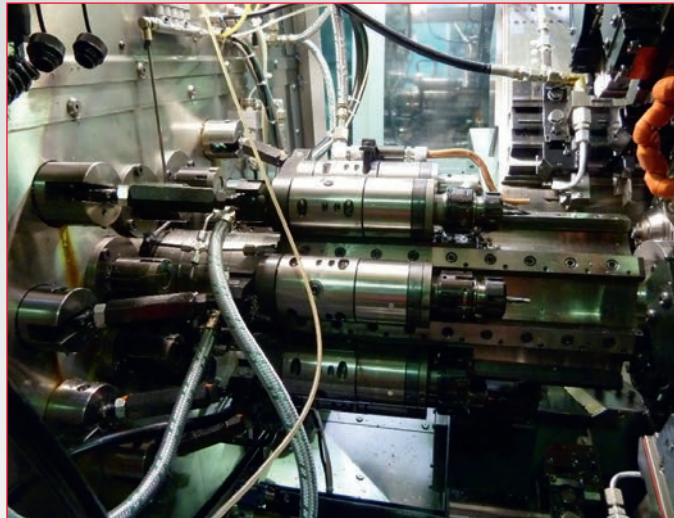


For Full Details, Photographs and Information please visit our websites:  
• [www.cottandco.com](http://www.cottandco.com) •

# CNC Multi Axis Lathes



- **Tornos Multi Deco 20/8b 8-Spindle Multi Axis CNC Lathe** with Tornos Fanuc PNC Deco CNC Control, NSK E3000C High Speed Spindle Controller, 20,909 running Hours (2007), Iemca PRA 5233F MultiBar Magazine Barfeed (2007), High Pressure Coolant Hydracell Pump, Olaer (Schweiz) AG Stork Tronic Chiller (2006) & Sermento Swarf Conveyor (2006)



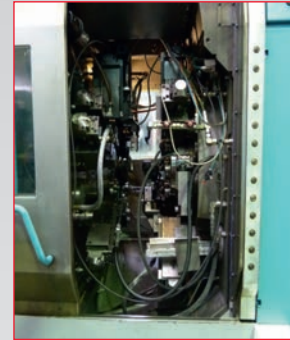
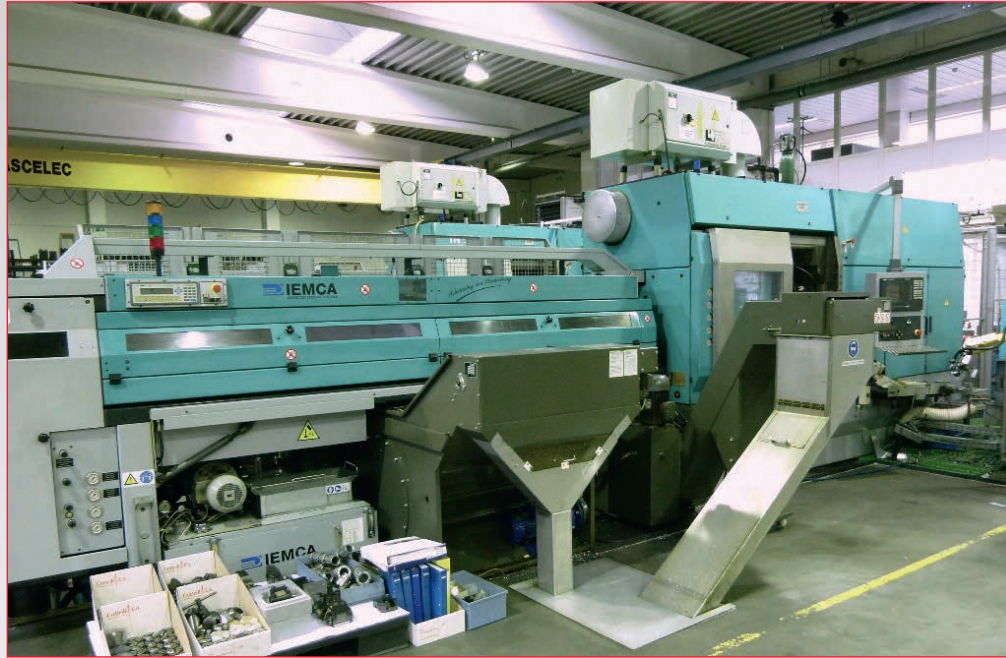
- **Tornos Multi Deco 20/8b 8-Spindle Multi Axis CNC Lathe** with Tornos Fanuc PNC Deco CNC Control, NSK Astro E400 Model NE52 High Speed Spindle Controller, 35,638 running hours (2004), Tornos MSF-522 MultiBar Magazine Barfeed (2004), Sediltec High Pressure Coolant/Filtration Hydra Chiller, Parts Conveyor, Vibra Tech Parts Turntable (2005) & Sermento Swarf Conveyor



For Full Details, Photographs and Information please visit our websites:

• [www.hilcoind.com](http://www.hilcoind.com) •

# CNC Multi Axis Lathes



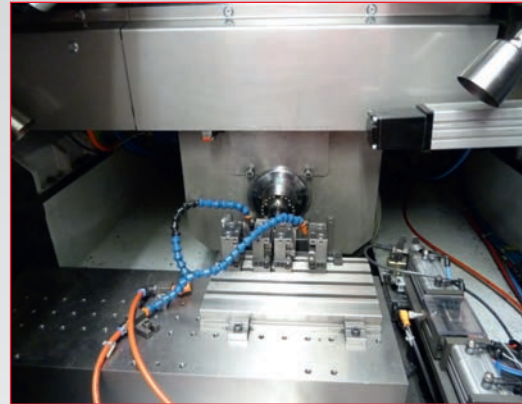
- **Index MS32G** (3) 6-Spindle Multi Axis CNC Automatic Lathe (1999) with Sinumerik C200-4D Control & (6) Sub-Spindles, Front End: (1) Turning/Back End Slide, (6) Turning Slides, (2) Cross Drilling Pick Up. Back End: (8) Turning Slides/Back End, Pick Up Unit & Parts Conveyor. Knoll 320S-1/250 Swarf Conveyor (1999), Knoll Maschinenbau VRF MT, Knoll VRF 500 Swarf Management System (1999), Iemca Type SIRMS32/33/F Multi Magazine Barfeed (1999), Lufttechnik Mist Extractor
- **Index MS32P 450033** 6-Spindle Multi Axis CNC Lathe (1999) with Sinumerik C200-4D Control, (6) Spindles, (6) Slides, (3) Cross Drill/Driven Tools, (1) Sub-spindle, (7) Turning Slides, Pickup Unit & Parts Conveyor (1999), Knoll Maschinen Bau VRF MT High Pressure Coolant, Knoll S320 S-1/250 Swarf Conveyor (1997), Knoll VRF 500, Iemca SIR MS32/33F Magazine Barfeed (2001), Lufttechnik Mist Extractor with Cell consisting of; Fanuc Robot M6iB Pick & Place Robot with Fanuc System R-3iB Control & Microrex CNC Centreless Grinder



# CNC Multi Axis Lathes



- **Kummer K250A** Speed CNC High Precision, High Production and Hard Turning Lathe with Siemens 840D-SL Control, Spindle Speeds: 300–10,000rpm, Linear X & Z Axis, Spindle with 'C' Axis, Bowl Feed & Schunk Loader (2009)



- **Hembrug Mikroturn 50** Slantbed CNC Hard Turning, High Precision Lathe with Siemens 840D Control, Renishaw M15 Probe, 8-Station Turret & Parts Feeder (1998) & Staubli Unimation RX60 Automation Robotics Arm (2001)



- (7) **Index V100** CNC Vertical Turning Centres with Siemens C200-4D Controls, 10,000rpm, Renishaw LP2 Probes, GMN Grinding Spindles, Mist Extractors & Parts Loaders, Round Track Systems by Schnaitmann, Fanuc Arc Mate 100iBE Robot & Eugen Hensle Loaders (2001-2008)

Continental Europe Contact: Martin Kolodziejczyk

• Tel: + 31 (0) 20 470 0989 • Email: [mkolo@hilcoglobal.com](mailto:mkolo@hilcoglobal.com) • [www.hilcoind.com](http://www.hilcoind.com) •

# CNC Multi Axis Lathes



• **Tornos** Deco 2000/26 Multi Axis CNC Lathe with Fanuc PNC Deco Control, Parts Conveyor, Boss S42 CNC/32R Magazine Barfeed & Lufftechnik Mist Extraction (1999)



• **Citizen** Cincom M-16 CNC Sliding Head Lathe with Mitsubishi Meldas Control, 10-Station Turret, Sub-Spindle, Parts Catcher, Parts Conveyor (2000), Lemca Boss 432/32 Magazine Barfeed (2000), Lufftechnik Mist Extraction



• **Hardinge** Conquest Twin Turn 65 7-Axis Turning Centre with Fanuc 18iT Control, Twin 12-Station Turrets with Driven Tools, (1998 - USA Built), Swarf Conveyor, Parts Catcher & Conveyor Promatec Mist Extraction, Lemca Tal Auto 65/32 Mag Barfeed (1999)



• **Schaublin** 110-CNC Slant Bed CNC Lathe with Fanuc 18T Control, Tumac Bowl Feeder & Loader, Platern Tools (1997)



• (2) **Traub** TNS26DGY Multi Axis CNC Lathes with Traub System TX8F Controls, Sub-spindles, Twin 12-Station Turrets, Driven Tools, Parts Catchers, Parts Conveyors, Swarf Conveyors, Lemca Mini Boss 32 & Traub Stamag DN26 Magazine Barfeeds



• **Mazak** Quick Turn 8 CNC Lathe with Mazatrol CAM T-2 Control, Turning Capacity: 160 x 250mm, 8-Station Turret, Collet Chuck, 3-Jaw Chuck, Turret Tools, Tool Presetter & Tailstock

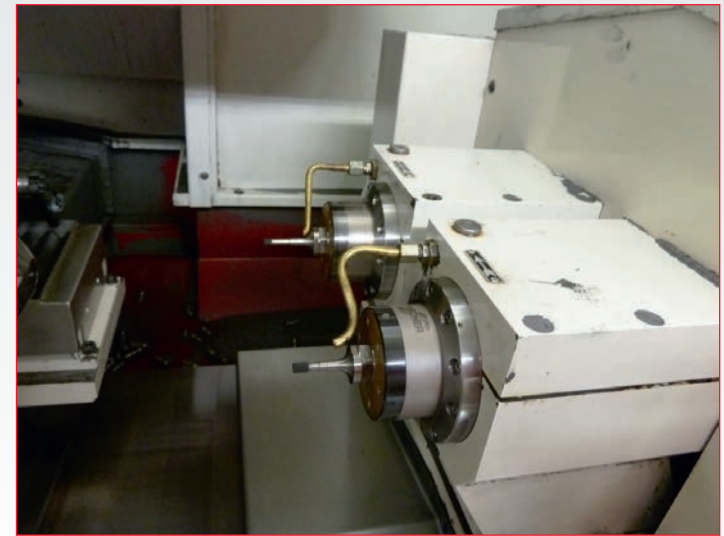
For Full Details, Photographs and Information please visit our websites:

• [www.cottandco.com](http://www.cottandco.com) •

# CNC Internal & CNC Centreless Grinding



- **Studer** Model S140 CNC Internal Grinder with Fanuc Series 16-T Control, Granite Bed, (2) Fischer Internal Spindles (different diameters), Auto Dressing, Wenger Bowl Feed, Port Feeder Robot, Studer Movomatic ES600 Control, Dittel M5000 (Gauging), Technotherm Chiller, Hans Streuli Paper Clarification & Erni Filter Mist (2001)
- **Studer** Model S140 CNC Internal Grinder with Fanuc 16i Control, (2) Fischer Internal Spindles (different diameters), Granite Bed, Dittel M5000 Gauging, Wenger Automation Type High Speed Bowl Feed & Robot, Auto Dresser, 27,300 hours, Hans Haas Streuli Paper Clarification, Technotherm Chiller & Erni Filter Mist (2002)
- **Tschudin** Ecoline 400 CNC Centreless Grinder with Fanuc 21iMB Control, Max. Diameter: 100mm, Granite Base, Marposs E78 Balancer, Tumac Uniop Control Type TR25 Bowl Feed, Parts Feeder, Load & Unloads, Auto Fire Extinguisher & Plunge Feed (2007)
- **Tschudin** Ecoline 400 CNC Centreless Grinder with Fanuc 21iMB Control, Max. Diameter: 100mm, Granite Base, Marposs E78 Balancer, Tumac Uniop Control Bowl Feed, Parts Feeder, Through Feed, Auto Fire Extinguisher, Robostar Robot (2003)
- **EWAG** WS11SP Universal Tool Grinding Machine with Axesta Visulesta 100 & RSF Electronic Readout (2000)



For Full Details, Photographs and Information please visit our websites:

• [www.hilcoind.com](http://www.hilcoind.com) •

# Honing & Vertical Machining Centre

Cottrill & Co.  
WORLDWIDE ASSET DISPOSALS

Hilco  
Industrial

- **Kadia** Model 5PH60/250T 15-Station Honing Machine with Unipos UCP1000 Control, (5) Vertical Main, (8) Small Vertical, (2) 4-Station Drills, (2) Small Horizontal, Round Track Feed, Bowl Feed, Pick & Place Robot, Nedermann Mist Extractor (2001)
- **Kadia** Model 4PH60/250T 11-Station Honing Machine with Unipos UCP1000 Control, (4) Vertical Hones (main), (2) Small Horizontal, (1) 4-Station Drill, (6) Small Vertical, Bowl Feed, Pick & Place Robot, Track through Feed, Nedermann Mist Extractor (1999)
- **Sunnen** ML-3500-CGMIAG High Performance Precision Honing Machine with Eutomation Bowl Parts Feed & Unloader (1999)
- **Sunnen** ML-3500-CG-MI High Performance Precision Honing Machine (1998)
- **Sunnen** MBC 1804 Precision Honing Machine
- **Sunnen** CGM-5000 CP Kross Grinding Machine with Nematron Optitouch
- **Chiron** FZ08W Twin Pallet High Speed Vertical Machining Centre with Siemens Control, Pallets: 550 x 300mm, 12-Station ATC & Renishaw MP15P Probe (2001)



UK Contact: Martin Cottrill

• Tel: + 44 (0) 121 328 2424 • Email: [info@cottandco.com](mailto:info@cottandco.com) • [www.cottandco.com](http://www.cottandco.com) •



# Surface Treatment



- **Durr Ecoclean Universal 71C Precision Cleaning System** with Siemens Simatic OP17 Control, Dowclene 160 - cleaning: medium, 1800litre, 21kw, 56° (2005)
- **Durr Ecoclean Universal 71W Precision Cleaning System**, Solutions Aqueuses, 1000 litre, 55kw, cleaning: medium (2005)
- **Durr Ecoclean Universal 81C Precision Cleaning System**, Heating capacity: 29kw, Filling capacity: 1400litres, Cooling capacity: 21kw, lowest admissible Flashpoint: 56°, KWS V6FA3, Cleaning: Medium (2007)
- **Bremer** (Swiss) Twin Rotary Barrel Shot Blast Cabinet (1996)
- **Bremer** Twin Shot Blast Cabinet
- **Bremer** Shot Blast Cabinet (1991)
- **Pero** Parts Washer (1998)
- **Cetema** Dosatron Parts Rumbler
- **Rosler** RC120 & RC50PO Parts Rumlbers

Continental Europe Contact: Martin Kolodziejczyk

• Tel: + 31 (0) 20 470 0989 • Email: [mkolo@hilcoglobal.com](mailto:mkolo@hilcoglobal.com) • [www.hilcoind.com](http://www.hilcoind.com) •

# High Quality Inspection Equipment (over 100 Items)



- **Mitutoyo** BX303 Coordinate Measuring Machine
- **Mahr** MMQ40 Formtester
- **Mahr** PST-MSE Perthometers
- **Tesa** Hite 350 Height Gauge
- **Carl Zeiss** Rotary Table
- System ARF1 Digital Micro Hardness Tester
- **Gnehm** G160 RODi Hardness Tester
- **Taylor Hobson** Talyrond 365 Roundness Tester
- **Taylor Hobson** Form Talysurf
- **Deltronic** DH216 Projector
- **Tesa Profile** 30 Projector
- **Deltron** DH400 Projector
- **Tesa Scope** 5000V Projector
- **Mettler Toledo** AG245 Digital Scales
- **Tesa** Rugosurf 90G Roughness Tester/Gauge
- **Wild** M3C Scope
- **Leica** MS5, MZ75, MZ95, KL1500LCD & CLS150V Scopes
- Qty Digital Bore Gauges & Inspection Scopes
- Plus many more items

For Full Details, Photographs and Information please visit our websites:  
• [www.cottandco.com](http://www.cottandco.com) •

# Rotary Assembly Machines, Pick & Place Units, Parts Counter & Sorters, Robotic Cells & Gauging

- **Felsomat** Assembly Machine with (2) Siemens Pick & Place Robots, 30-Station Linear Carousel, 4-Station Blister Packing Palletisers, 4-Station Crate Component Loaders, (3) Ateq Dry/ Clean Pressure Source Controllers, Various Camera, Gauging & Assembly Stations
- **CMS** Assembly Machine with Uniop Controller (currently assembling small piston and cylinders) with Humard Automation (Swiss) Parts Palletiser, Conveyor & Bowl Feeder, Fancu LR Mate 200ib Pick & Place Robot (2003), Camera TC Series BI Telecentric Lenses & Unload Conveyor
- (5) **AR Technic** Rotary Assembly Machines—36, 12, 8 & 6- Station Rotary Tables with Fancu Robots, Hand Controllers, Cameras, Ateq Metro Controllers, Bowl Feeders, Gauging & Blister Packing Palletisers (2004)
- (3) **Atis** Rotary Assembly Machines - 10 & 6 Station Rotary Tables with Ateq & Proface Controllers, Cameras, Bowl Feeds & Gauging (2001-2004)
- **AR Technic & France Vibrations** Parts Counters/Sorters (2002-2005)



For Full Details, Photographs and Information please visit our websites:

• [www.hilcoind.com](http://www.hilcoind.com) •

# Miscellaneous, Tooling & Workshop Equipment, Office Equipment (over 100 lots)

**Cottrill & Co.**  
WORLDWIDE ASSET DISPOSALS



**Hilco**<sup>TM</sup>  
Industrial

- **Weiler** Praktikant 160 Lathe
- **Kondia** Powermill FV1Turret Mill
- **Struers** Labotom-3 Abrasive Cut Off Saw
- **Record** Tool & Cutter Grinder with Internal Spindle
- **Atlas Copco** Type GA75FF Compressor (2008)
- **Atlas Copco** Type GA50VSD Compressor (1999)
- **Atlas Copco** GA30 Compressor
- **TCM** FB25-6 Forklift Truck with Side Shift, Solid Tyres & 2500kg Capacity (1997)
- **AIP Systems** 2000kg Digital Pallet Truck & Euro Lifter Pallet Truck
- **(2) Euroloc** Type Pedestrian Lift Trucks, 1000kg & 1300kg Capacities (1997-1999)
- 15-Station Stainless Steel Oil/Fluid/Degreasant Dispenser
- **Nedermann** Filter (2006)
- **Cyklop** Type GL110/11 110 00 Pallet Wrapper
- **Getra** Packaging Strapping Machine (1995)
- Large Qty of Quality Racking
- **Audionvac** VMS153 Vac Former
- **Sofroper** & Uni Cleaner Floor Cleaners
- Qty High Quality Office Furniture plus many more items



**PLEASE NOTE: A BUYERS PREMIUM OF 16% WILL BE CHARGED AT THESE AUCTIONS**

PLEASE NOTE: Although information has been obtained from reliable sources Cottrill & Co/Hilco Industrial make no warranty or guarantee, expressed or implied, as to the accuracy of the information contained in this flyer. Photographs are taken prior to lotting and lots are sold as viewed and described in the Auction Catalogue.

• [www.cottandco.com](http://www.cottandco.com) • [www.hilcoind.com](http://www.hilcoind.com) •